

# Welcome to WEstjustice

About our organisation  
and seeking legal help



# Who is WEstjustice?

**WEstjustice** is a community organisation that provides free legal help to people in the Western suburbs of Melbourne.

We give **legal help** to workers with a problem at work.

We give **information** to the community.

We try and **make the law better** for all people.

**We can use an interpreter to assist you.**



If you do not understand something, please ask us a question.



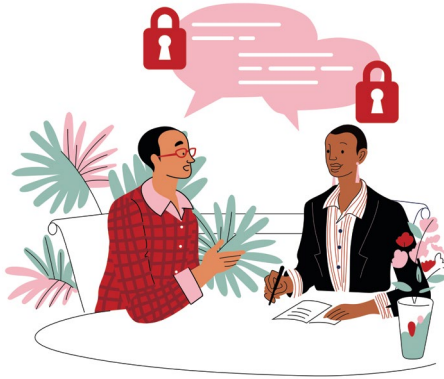
## Your appointment today

We will collect details from you to open a file.

We will **listen** to your story (take instructions).

We will keep your information for **7 years**, after which time it will be destroyed.

We will give you **advice** and **information**.



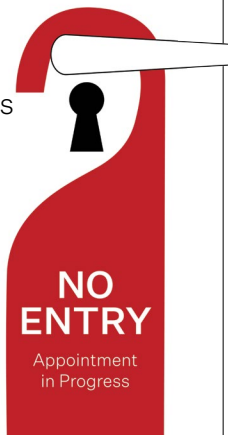
We won't tell anyone about your case

Everything you tell us is **confidential**.

We will not discuss your case with anyone outside WEstjustice **unless you agree or the law tells us to.**

This includes:

- Your boss
- Family members
- Counsellors
- Organisations.



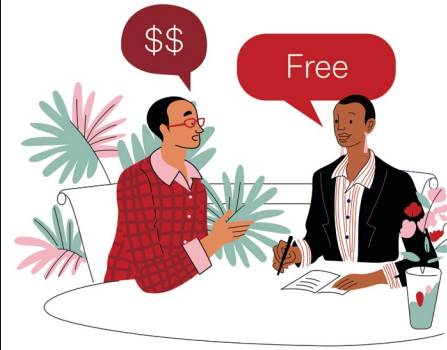
You choose what happens in your case

There are lots of ways to fix your legal problem.

We will tell you about the law and your options so you can decide the best option for you.

**You will choose what you want to do next.**

We will not take any action without your permission.



Our service is free

**We do not charge** for the legal work that we do.

If you decide to make a claim you might need to spend money on things like court fees.

**If you need to spend money we will tell you.**



What we will and will not do for you

We **will** help as much as we can today.

We **will not** provide ongoing representation or assistance with your problem unless we tell you in writing.





# Questions?

## **WEstjustice**

(Interpreters available)

(03) 9749 7720

[westjustice.org.au](http://westjustice.org.au)

**Illustration** Lilian Darmono @liliandarmono

**Design** Stephanie Mulder @yardbird\_studio

**Strategy** Tim Dow @timrobdondow

### **Disclaimer**

This document contains general information only and is NOT legal advice. If you require advice about your specific circumstances please consult a lawyer or your union. This information is current at 16 February 2021.